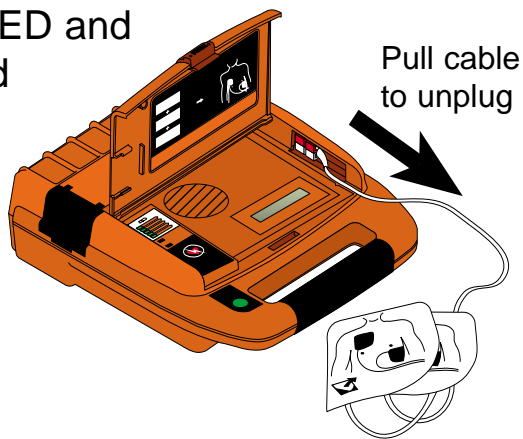


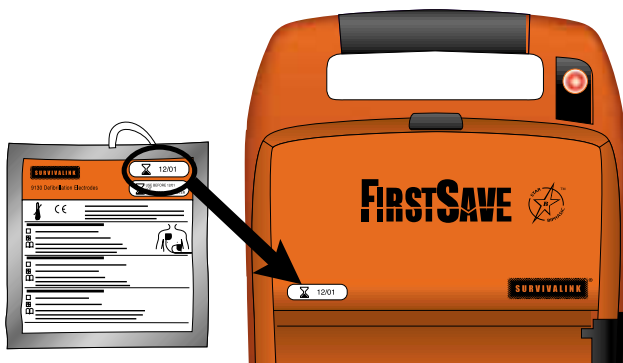
FirstSave Automated External Defibrillator

Post Use Procedure

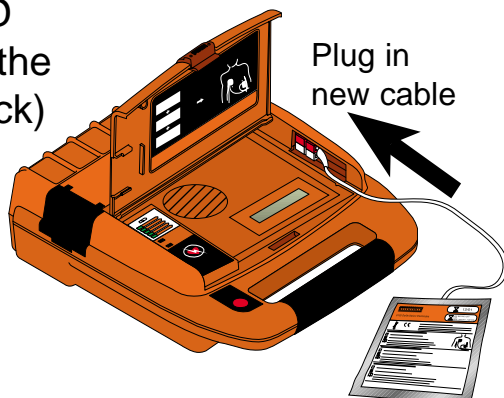
1. Remove used electrodes from AED and discard



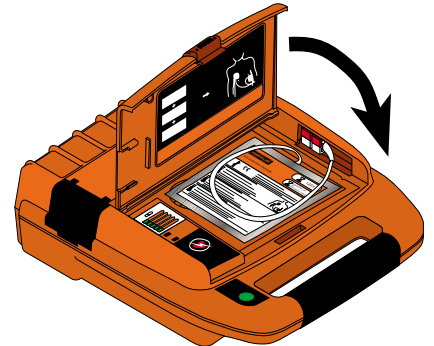
2. Take a new electrode package & place one expiry date sticker on the outside of the AED



3. Connect the new pair of electrodes to the AED (Leave in the sealed pack)



4. Place the new electrodes in the storage space & close the lid



5. Verify that the AED indicator on the handle is **GREEN**



6. Place the defibrillator back in the cabinet. To re-set the alarm see Wall Cabinet Procedure Chart

IMPORTANT

Contact LifeTec Medical to arrange data downloading

Telephone:
0161 941 3597